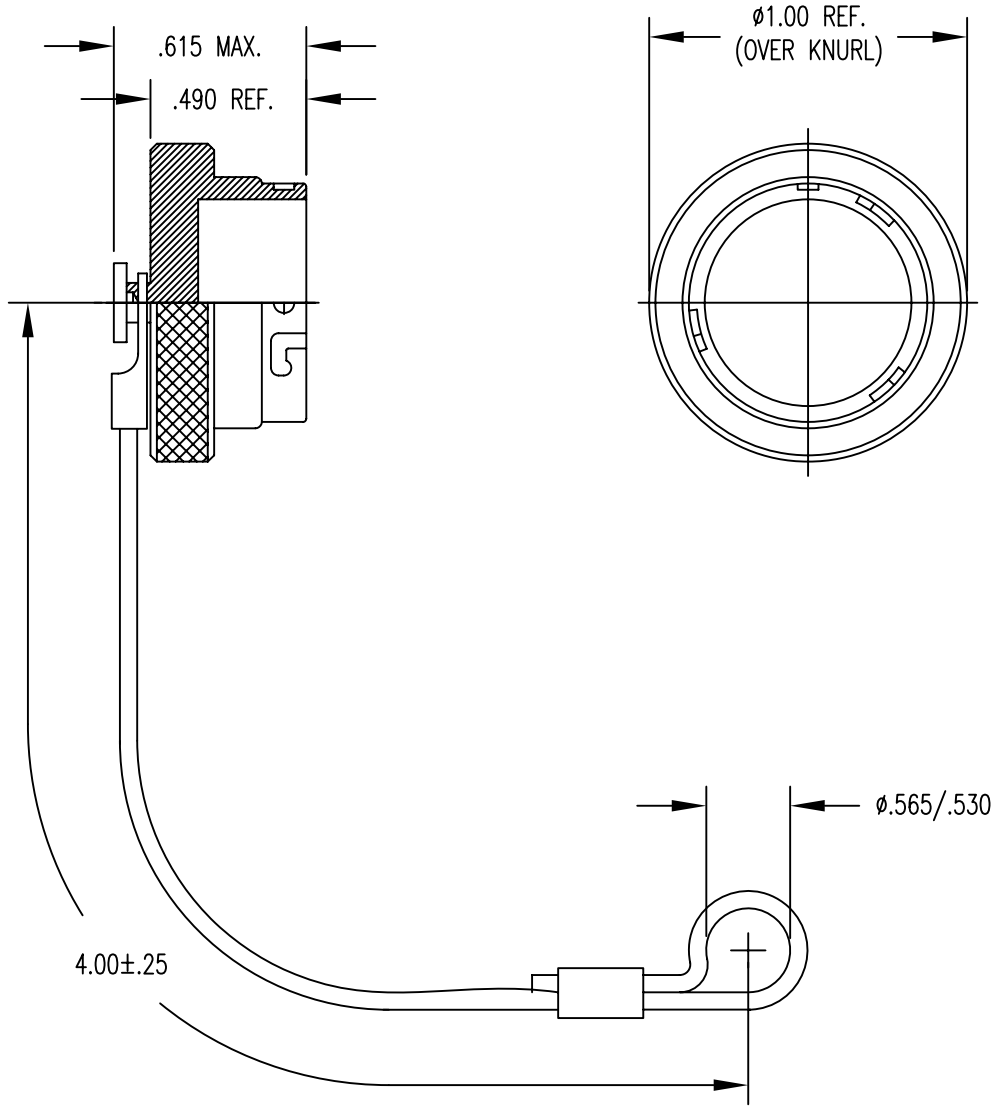


APPLICATIONS		REVISIONS			
NEXT ASSEMBLY	USED ON	REV.	DESCRIPTION	DATE	APPROVED
		P1	RELEASED TO SALES	7-2-02	AH



FILE NAME: MC889.dwg

UNLESS OTHERWISE SPECIFIED
DIMENSIONS ARE IN INCHES
TOLERANCES ARE:
FRACTIONS DECIMALS ANGLES
±1/64 .XX ±.01 ±1/2°
.XXX ±.003

THE INFORMATION DISCLOSED IN
THIS DOCUMENT IS CONFIDENTIAL
AND PROPRIETARY TO MIL-CON,
INC. AND MAY NOT BE USED FOR
MANUFACTURE OR ANY OTHER
PURPOSE WITHOUT THE WRITTEN
CONSENT OF MIL-CON, INC.

CONTRACT NO.	
APPROVALS	DATE
DRAWN A. Huezo	07/02/02
CHECKED	
ISSUED	

MIL-CON TM AN AFFILIATE OF THE PHOENIX COMPANY OF CHICAGO			
MC889 DUST CAP			
SIZE A	FSCM NO. 63525	DWG. NO. SD: MC889	REV. P1

SPECIFICATIONS:

- 1) MATERIALS:
COVER AND FASTENER: STAINLESS STEEL
CORD: 1/32 DIA. STAINLESS STEEL
TERMINALS: STAINLESS STEEL
- 2) FINISHES/COLOR:
COVER AND FASTENER: PASSIVATED, SAND BLASTED
CORD: NYLON COATED
TERMINALS: PASSIVATED
- 3) DUST CAP MATES WITH MC-A3245089-1, MC-A3245089-3,
AND MC-502622-1
- 4) UNLESS OTHERWISE SPECIFIED, ALL DIMENSIONS ARE
FOR REFERENCE ONLY.

MIL-CONTM

FILE NAME: MC889.dwg

DRAWN A. Huevo	SIZE A	FSCM NO. 63525	DWG. NO. SD: MC889	REV. P1
ISSUED	SCALE NONE		SHEET 2	OF 2