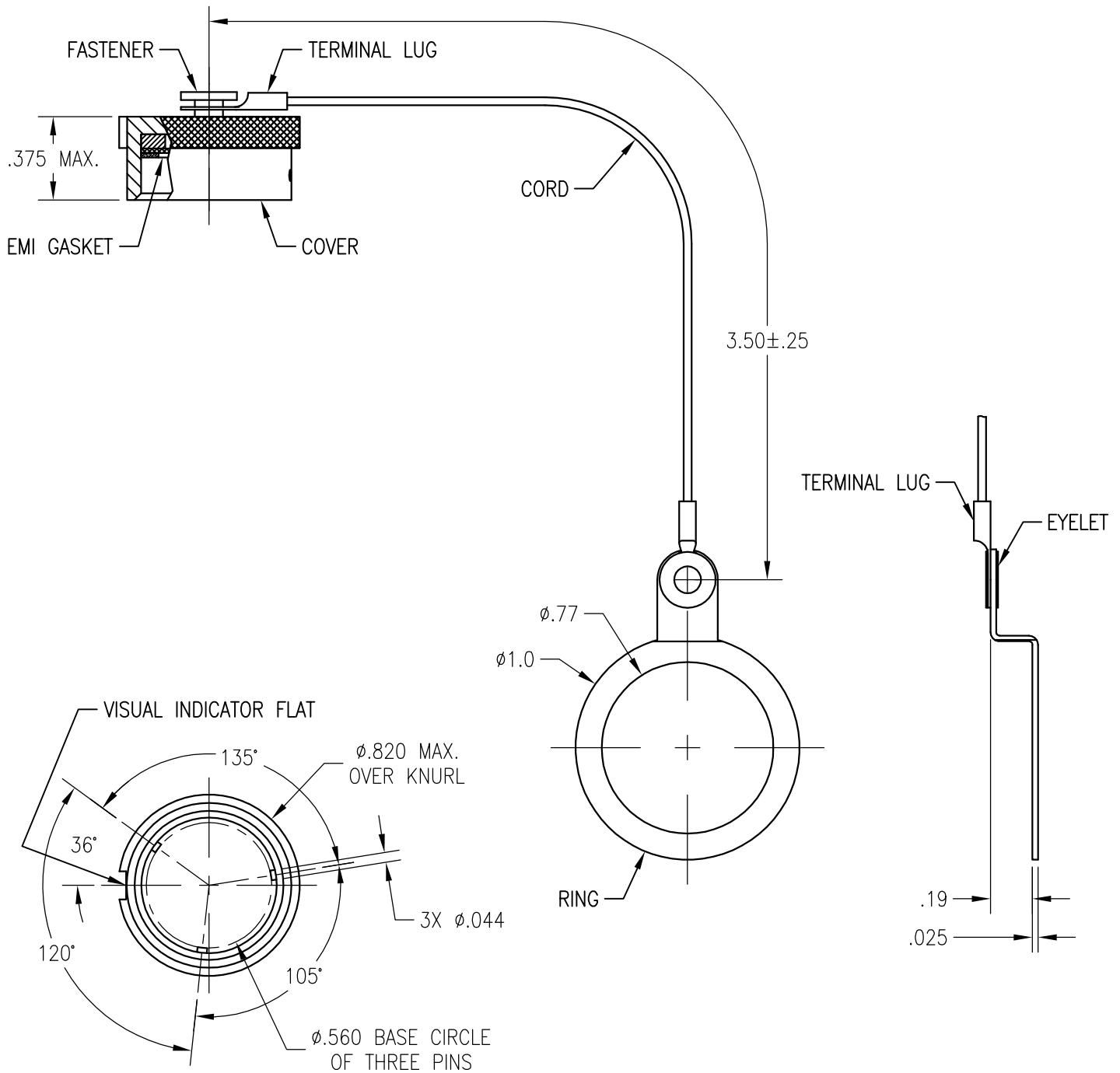


APPLICATIONS		REVISIONS			
NEXT ASSEMBLY	USED ON	REV.	DESCRIPTION	DATE	APPROVED
		01/A	RELEASED FOR PRODUCTION	10-27-16	AH



FILE NAME: MC811D-2.dwg

UNLESS OTHERWISE SPECIFIED  
DIMENSIONS ARE IN INCHES  
TOLERANCES ARE:  
FRACTIONS DECIMALS ANGLES  
±1/64 .XX ±.01 ±1/2°  
.XXX ±.003

THE INFORMATION DISCLOSED IN  
THIS DOCUMENT IS CONFIDENTIAL  
AND PROPRIETARY TO MIL-CON,  
INC. AND MAY NOT BE USED FOR  
MANUFACTURE OR ANY OTHER  
PURPOSE WITHOUT THE WRITTEN  
CONSENT OF MIL-CON, INC.

CONTRACT NO.	
APPROVALS	DATE
DRAWN A. Huezo	10/27/16
CHECKED A. Huezo	10/27/16
ISSUED	

**MIL-CON**<sup>TM</sup>  
AN AFFILIATE OF THE PHOENIX COMPANY OF CHICAGO

MC811D-2 DUST CAP

SIZE A	FSCM NO. 63525	DWG. NO. SD: MC811D-2	REV. 01/A
-----------	-------------------	--------------------------	--------------

DO NOT SCALE DRAWING

SCALE NONE

SHEET 1 OF 2

SPECIFICATIONS:

- 1) MATERIALS:  
COVER: ALUMINUM ALLOY.  
FASTENER: ALUMINUM ALLOY.  
TERMINALS: STAINLESS STEEL.  
RING: STAINLESS STEEL.  
EYELET: BRASS.  
CORD: NYLON.
- 2) FINISHES/COLOR:  
COVER: OLIVE DRAB OVER CADMIUM.  
FASTENER: OLIVE DRAB OVER CADMIUM.  
TERMINALS: PASSIVATED.  
RING: SAND BLASTED.  
EYELET: CLEAR CHROMATE OVER CADMIUM.  
CORD: OLIVE DRAB.
- 3) MC811D-2 DUST CAP MATES WITH:  
MC183 - ALL VERSIONS.  
MC283 - ALL VERSIONS.  
MC228 - ALL VERSIONS.  
MC328 - ALL VERSIONS.  
MC183S - ALL VERSIONS.  
MC683S - ALL VERSIONS.
- 4) UNLESS OTHERWISE SPECIFIED, DIMENSIONS ARE FOR REFERENCE ONLY.

<b>MIL-CON</b> <sup>TM</sup>	FILE NAME: MC811D-2.dwg			
	SIZE	FSCM NO.	DWG. NO.	REV.
	A	63525	SD: MC811D-2	01/A
DRAWN A. Huevo	SCALE	NONE	SHEET 2	OF 2
ISSUED				