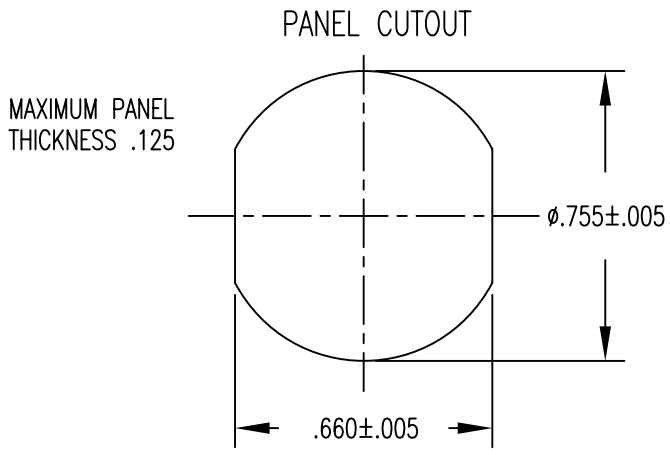
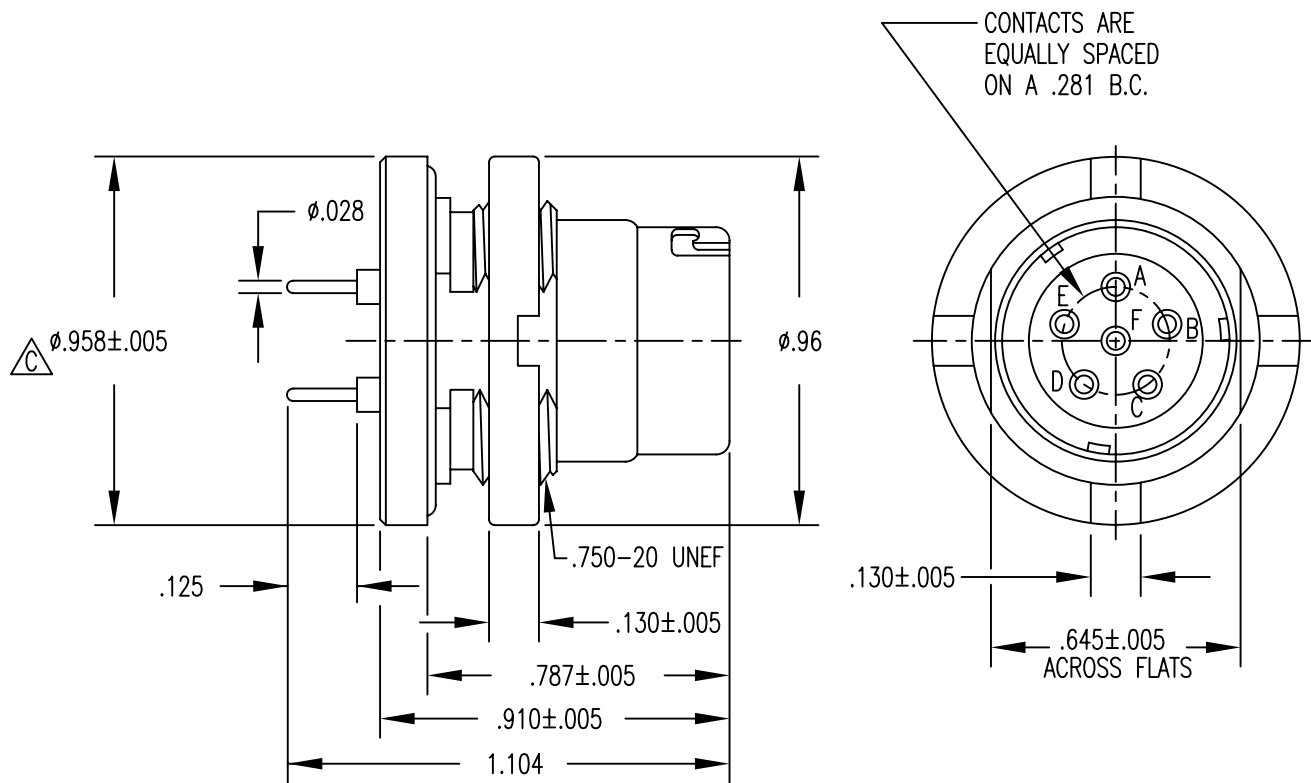


APPLICATIONS		REVISIONS			
NEXT ASSEMBLY	USED ON	REV.	DESCRIPTION	DATE	APPROVED

		A	RELEASED TO SALES; ENN: 0005	9-24-86	PB
		B	REVISED	12-12-90	AG
		C	DELETED NOTE 7; $\phi.958\pm.005$ WAS $\phi.960\pm.003$ ; ECO-05633	11-10-06	CBV



FILE NAME: MC283-9.dwg

UNLESS OTHERWISE SPECIFIED DIMENSIONS ARE IN INCHES TOLERANCES ARE: FRACTIONS DECIMALS ANGLES $\pm 1/64$ .XX $\pm .01$ $\pm 1/2^\circ$ .XXX $\pm .003$	CONTRACT NO.		<b>MIL-CON™</b> AN AFFILIATE OF THE PHOENIX COMPANY OF CHICAGO		
	APPROVALS				
THE INFORMATION DISCLOSED IN THIS DOCUMENT IS CONFIDENTIAL AND PROPRIETARY TO MIL-CON, INC. AND MAY NOT BE USED FOR MANUFACTURE OR ANY OTHER PURPOSE WITHOUT THE WRITTEN CONSENT OF MIL-CON, INC.	DRAWN A. Green		12/12/90		MC283-9 AUDIO CONNECTOR
	CHECKED A. Huevo		11/13/06		
	ISSUED				
DO NOT SCALE DRAWING	SIZE A	FSCM NO. 63525	DWG. NO. SD: MC283-9	REV. C	SCALE NONE
			SHEET 1 OF 2		

SPECIFICATIONS:

- 1) MATERIALS:  
SHELL AND PANEL NUT: STAINLESS STEEL  
CONTACTS: COPPER ALLOY  
INSULATOR: DIALLYL PHTHALATE PER MIL-M-14, TYPE MDG
- 2) FINISHES/COLOR:  
SHELL AND PANEL NUT: PASSIVATED, SAND BLASTED  
CONTACTS: .000030 GOLD PER MIL-G-45204, TYPE II,  
CLASS 0; OVER .000100 NICKEL PER QQ-N-290  
INSULATOR: BLUE
- 3) ELECTRICAL PROPERTIES:  
OPERATING VOLTAGE: 60 VOLTS MAXIMUM POTENTIAL  
CURRENT RATING: 0.5 AMPS MAXIMUM  
DIELECTRIC BREAKDOWN: 500 VOLTS RMS  
INSULATION RESISTANCE: 1000 MEGOHMS MINIMUM  
CONTACT RESISTANCE (MATED): 0.04 OHMS MAXIMUM
- 4) MECHANICAL PROPERTIES:  
AIR PRESSURE: 2.5 P.S.I.  
WATER IMMERSION: 48 HOURS AT 6 FEET  
DURABILITY: 3000 CYCLES, MATE AND UNMATE
- 5) MC283-9 RECEPTACLE MATES WITH:  
MC617 - ALL VERSIONS  
MC329 - ALL VERSIONS
- 6) DIMENSIONS ARE FOR REFERENCE ONLY, UNLESS OTHERWISE SPECIFIED

<b>MIL-CON</b> <sup>TM</sup>	FILE NAME: MC283-9.dwg			
	SIZE <b>A</b>	FSCM NO. <b>63525</b>	DWG. NO. SD: MC283-9	REV. C
	DRAWN A. Green	SCALE NONE	SHEET 2	OF 2
ISSUED				