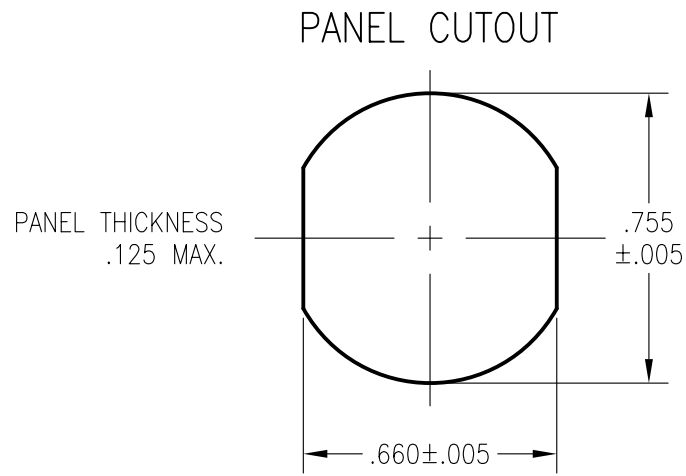
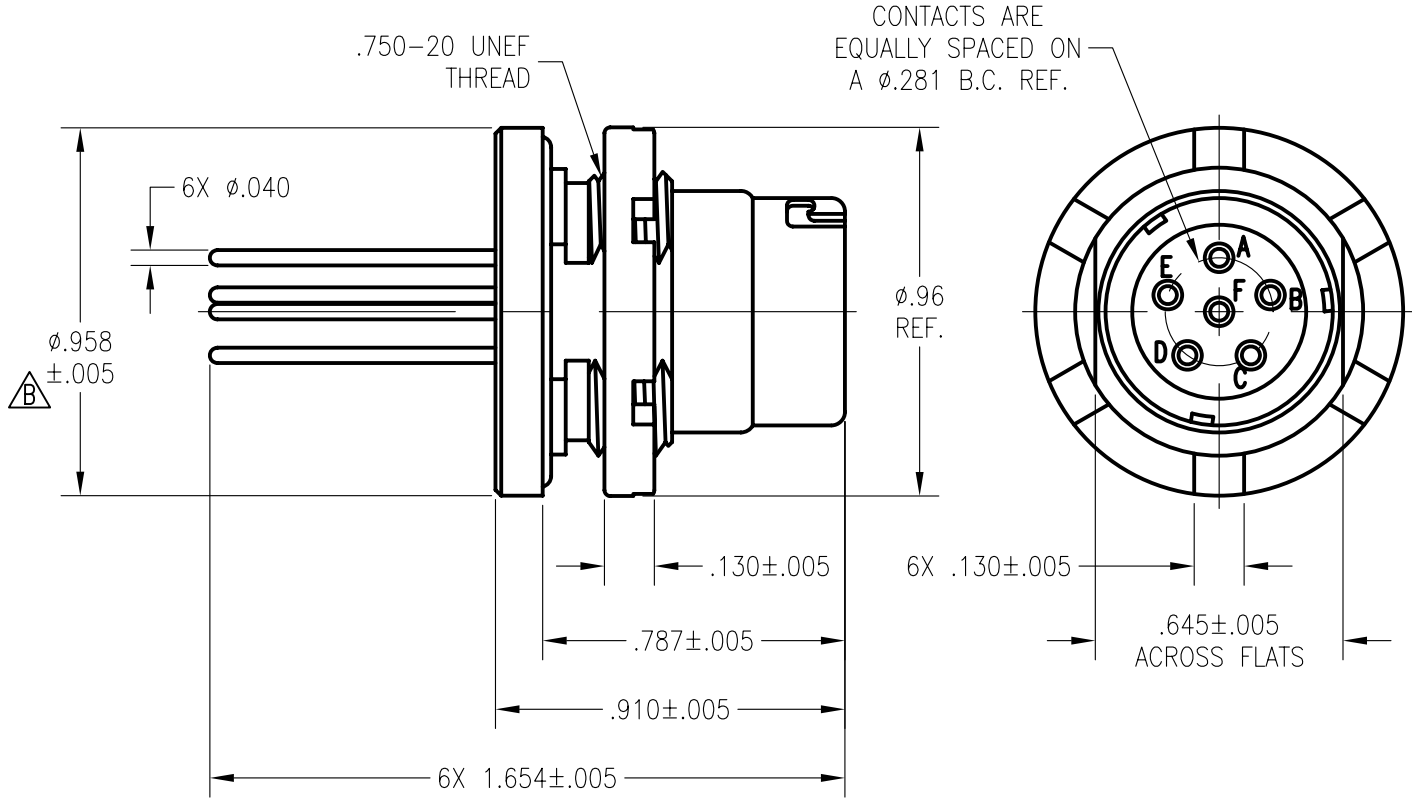


APPLICATIONS		REVISIONS			
NEXT ASSEMBLY	USED ON	REV.	DESCRIPTION	DATE	APPROVED
		A	RELEASED TO SALES	06-22-06	CBV
		B	DELETED NOTE 7; $\phi.958 \pm .005$ WAS $\phi.960 \pm .003$; ECO-05633	11-10-06	CBV



FILE NAME: MC283-16CN6.dwg

UNLESS OTHERWISE SPECIFIED DIMENSIONS ARE IN INCHES TOLERANCES ARE: FRACTIONS DECIMALS ANGLES $\pm 1/64$ $.XX \pm .01$ $\pm 1/2^\circ$ $.XXX \pm .003$	CONTRACT NO.		MIL-CON™ AN AFFILIATE OF THE PHOENIX COMPANY OF CHICAGO		
	APPROVALS				
THE INFORMATION DISCLOSED IN THIS DOCUMENT IS CONFIDENTIAL AND PROPRIETARY TO MIL-CON, INC. AND MAY NOT BE USED FOR MANUFACTURE OR ANY OTHER PURPOSE WITHOUT THE WRITTEN CONSENT OF MIL-CON, INC.	DRAWN C. Velasco		06/22/06		MC283-16CN6 AUDIO CONNECTOR
	CHECKED A. Huevo		11/13/06		
	ISSUED				
DO NOT SCALE DRAWING		SIZE A	FSCM NO. 63525	DWG. NO. SD: MC283-16CN6	REV. B
		SCALE NONE		SHEET 1 OF 2	

SPECIFICATIONS:

- 1) MATERIALS:
SHELL AND PANEL NUT: STAINLESS STEEL.
CONTACTS: COPPER ALLOY.
INSULATOR: DIALLYL PHTHALATE PER MIL-M-14, TYPE MDG.
- 2) FINISHES/COLOR:
SHELL AND PANEL NUT: PASSIVATED, SAND BLASTED.
CONTACTS: .000030 GOLD PER MIL-G-45204, TYPE II,
CLASS 0; OVER .000100 NICKEL PER QQ-N-290.
INSULATOR: BLUE.
- 3) ELECTRICAL PROPERTIES:
OPERATING VOLTAGE: 60 VOLTS MAXIMUM POTENTIAL.
CURRENT RATING: 0.5 AMPS MAXIMUM.
DIELECTRIC BREAKDOWN: 500 VOLTS RMS.
INSULATION RESISTANCE: 1000 MEGOHMS MINIMUM.
CONTACT RESISTANCE (MATED): 0.04 OHMS MAXIMUM.
- 4) MECHANICAL PROPERTIES:
AIR PRESSURE: 2.5 P.S.I.
WATER IMMERSION: 48 HOURS AT 6 FEET.
DURABILITY: 3000 CYCLES, MATE AND UNMATE.
- 5) MC283-16CN6 RECEPTACLE MATES WITH:
MC617 - ALL VERSIONS.
MC329 - ALL VERSIONS.
- 6) DIMENSIONS ARE FOR REFERENCE ONLY, UNLESS OTHERWISE SPECIFIED.

MIL-CON TM	FILE NAME: MC283-16CN6.dwg			
	SIZE A	FSCM NO. 63525	DWG. NO. SD: MC283-16CN6	REV. B
	DRAWN C. Velasco	SCALE NONE	SHEET 2 OF 2	
ISSUED				