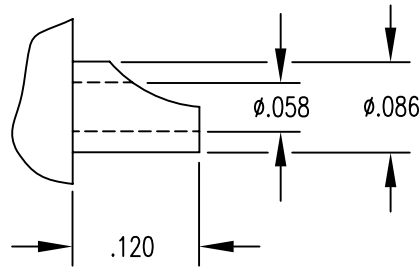
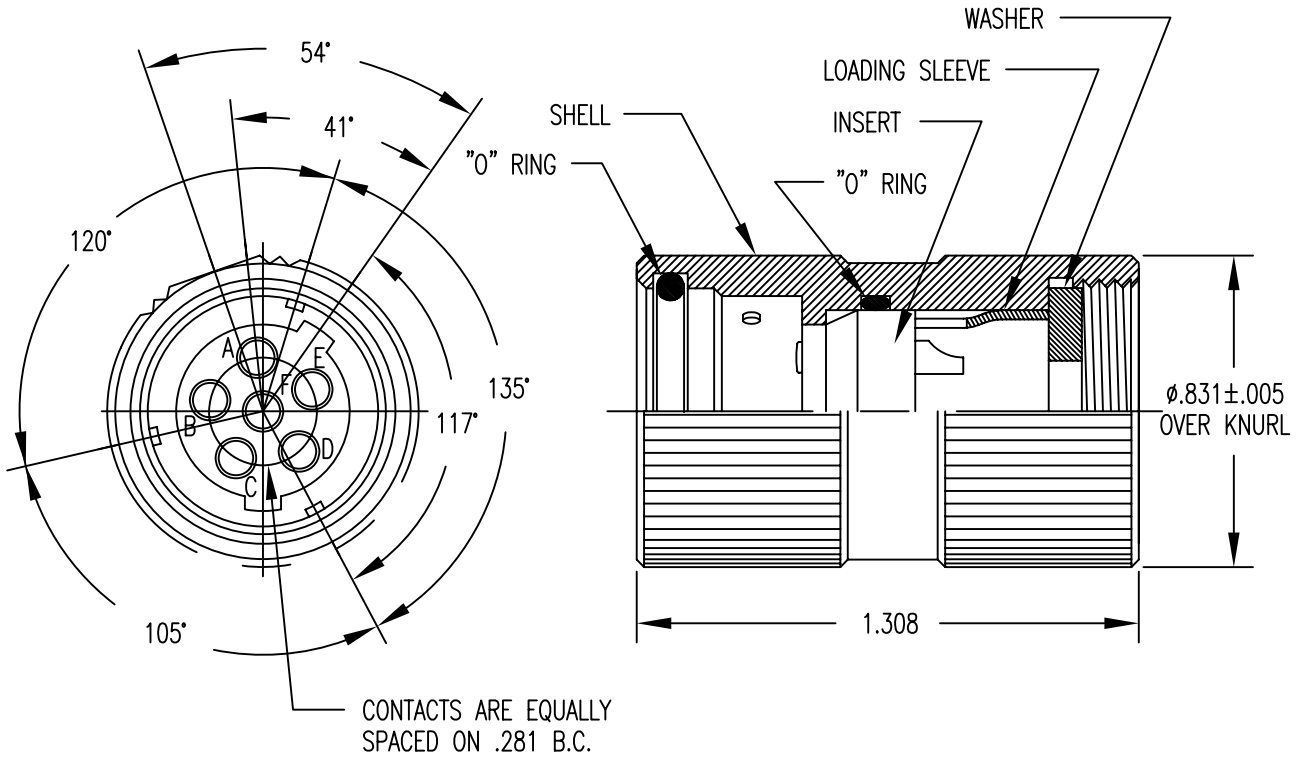


APPLICATIONS		REVISIONS			
NEXT ASSEMBLY	USED ON	REV.	DESCRIPTION	DATE	APPROVED
		-	RELEASED TO SALES;ENN:0020	5-27-87	DN
		A	CORRECTED MATING FACE;ENN:0020A	6-19-87	DN
		B	REVISED;REDRAWN	5-4-90	AG
		C	REVISED	2-15-91	AG
		D	DELETED NOTE 7; ECO-05633	11-10-06	CBV



SOLDER CUP TERMINAL DETAIL

FILE NAME: MC-ON241774-1.dwg

UNLESS OTHERWISE SPECIFIED DIMENSIONS ARE IN INCHES TOLERANCES ARE: FRACTIONS DECIMALS ANGLES $\pm 1/64$.XX $\pm .01$ $\pm 1/2^\circ$.XXX $\pm .003$	CONTRACT NO.		MIL-CON™ AN AFFILIATE OF THE PHOENIX COMPANY OF CHICAGO		
	APPROVALS				
THE INFORMATION DISCLOSED IN THIS DOCUMENT IS CONFIDENTIAL AND PROPRIETARY TO MIL-CON, INC. AND MAY NOT BE USED FOR MANUFACTURE OR ANY OTHER PURPOSE WITHOUT THE WRITTEN CONSENT OF MIL-CON, INC.	DRAWN A. Green		05/04/90		MC-ON241774-1 AUDIO CONNECTOR
	CHECKED A. Huezio		11/13/06		
	ISSUED				
DO NOT SCALE DRAWING	SIZE A	FSCM NO. 63525	DWG. NO. SD: MC-ON241774-1	REV. D	SCALE NONE
			SHEET 1 OF 2		

SPECIFICATIONS:

- 1) MATERIALS:
 SHELL: STAINLESS STEEL (CLASS 304)
 CONTACTS: BERYLLIUM COPPER
 INSULATOR: DIALLYL PHTHALATE PER MIL-M-14. TYPE MDG

- 2) FINISHES/COLOR:
 SHELL: PASSIVATED, SAND BLASTED
 CONTACTS: 0.000100 GOLD PER MIL-G-45204, TYPE II, CLASS 1;
 OVER 0.000100 NICKEL PER QQ-N-290
 INSULATOR: BLUE

- 3) ELECTRICAL PROPERTIES:
 OPERATING VOLTAGE: 60 VOLTS MAXIMUM POTENTIAL
 CURRENT RATING: 0.5 AMPS MAXIMUM
 DIELECTRIC BREAKDOWN: 500 VOLTS RMS
 INSULATION RESISTANCE: 1000 MEGOHMS MINIMUM
 CONTACT RESISTANCE: 0.040 OHMS MAXIMUM FROM 1 TO 1500 MATINGS
 0.100 OHMS MAXIMUM FROM 1500 TO 3000 MATINGS
 1.000 OHMS MAXIMUM AFTER 3001 MATINGS

- 4) MECHANICAL PROPERTIES:
 AIR PRESSURE: 2.5 P.S.I.
 DURABILITY: 3000 CYCLES, MATE AND UNMATE
 OPERATING TEMPERATURE: -54°C TO +71°C
 WATER IMMERSION: 48 HOURS AT 6 FEET

- 5) MC-ON241774-1 PLUG MATES WITH:
 ON241775 - ALL VERSIONS

- 6) DIMENSIONS ARE FOR REFERENCE ONLY, UNLESS OTHERWISE SPECIFIED

MIL-CON TM	FILE NAME: MC-ON241774-1.dwg		
	SIZE A	FSCM NO. 63525	DWG. NO. SD: MC-ON241774-1
	DRAWN A. Green		REV. D
ISSUED	SCALE NONE	SHEET 2 OF 2	