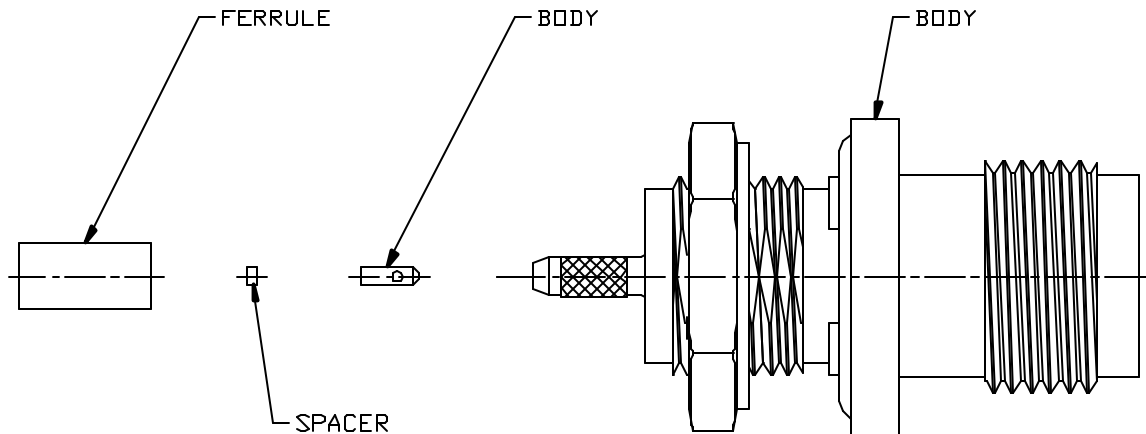


CABLE ASSEMBLY PROCEDURE	
P/N	42-1969-0490
PAGE 1 OF 1	DATE: 11/01/12
DRAWN: JEM	APPROVED: JEM
FOR USE WITH RG-178 CABLE	

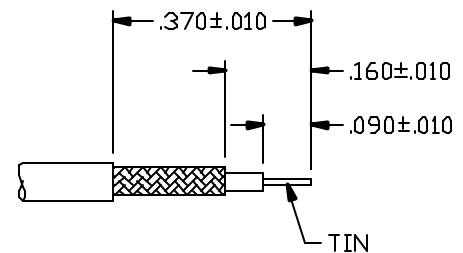
**PALEO**  
**CONNECTOR**

22 GREAT HILL ROAD, NAUGATUCK, CT. 06770  
PHONE: (203) 729-9090 FAX: (203) 723-1794

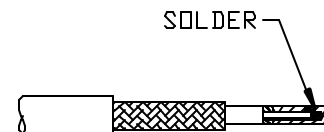
REV	DESCRIPTION	DATE	APPR
A	REL. ECN 11459	12/01/12	JEM



STEP 1  
TRIM CABLE TO DIMENSIONS SHOWN.



STEP 2  
SLIDE SPACER AND BULLET ONTO ABOVE CABLE. SOLDER BULLET TO CENTER CONDUCTOR AND CLEAN SOLDER JOINT.



STEP 3  
SLIDE FERRULE OVER CABLE. FLARE BRAID BY ROTATING CABLE DIELECTRIC.



STEP 4  
INSERT ABOVE CABLE INTO BODY WITH BRAID OVER BACK OF BODY UNTIL CABLE BOTTOMS. SLIDE FERRULE UP AGAINST BODY AND CRIMP USING .105 HEX DIE (M22520/5-03).

