
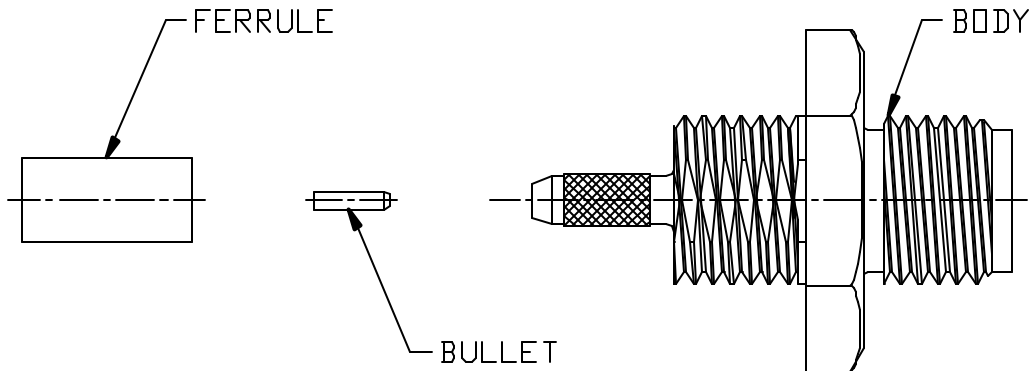
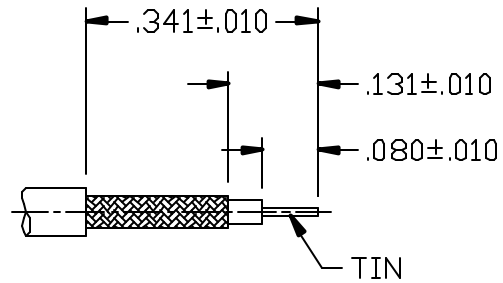


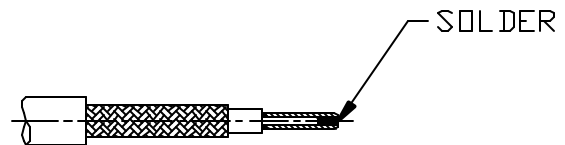
CABLE ASSEMBLY PROCEDURE		 22 GREAT HILL ROAD, NAUGATUCK, CT. 06770 PHONE: (203) 729-9090 FAX: (203) 723-1794	REV	DESCRIPTION	DATE	APPR
P/N	20-1917-0498		01	PRELIMINARY	9/10/12	JEM
PAGE 1 OF 1	DATE: 9/10/11		A	PER ECN 11450	09/19/12	JEM
DRAWN: JEM	APPROVED: JEM					
FOR USE WITH RG-178 CABLE						



STEP 1  
 TRIM CABLE TO DIMENSIONS  
 SHOWN. TIN CENTER CONDUCTOR.  
 CLEAN.



STEP 2.  
 SOLDER BULLET TO CENTER  
 CONDUCTOR AS SHOWN.



STEP 3  
 SLIDE FERRULE ONTO CABLE.  
 FLARE BRAID BY ROTATING  
 CABLE DIELECTRIC.



STEP 4  
 INSERT CABLE INTO BODY  
 UNTIL CABLE BOTTOMS.  
 SLIDE FERRULE UP UNTIL  
 IT BOTTOM ON SHOULDER.  
 CRIMP USING .105 HEX  
 DIE (M22520/5-03).

