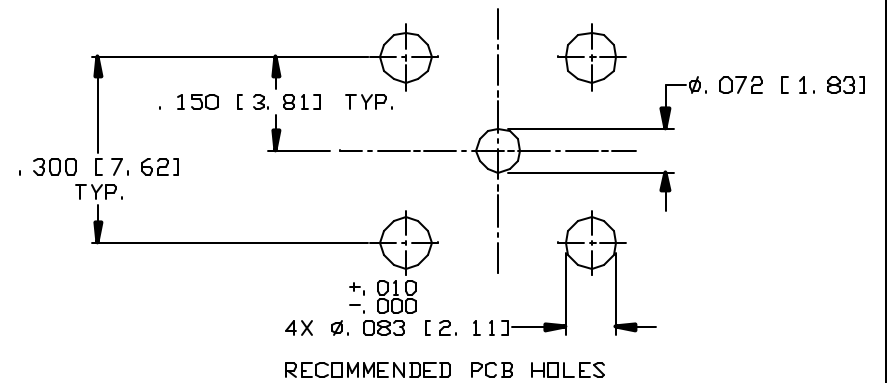
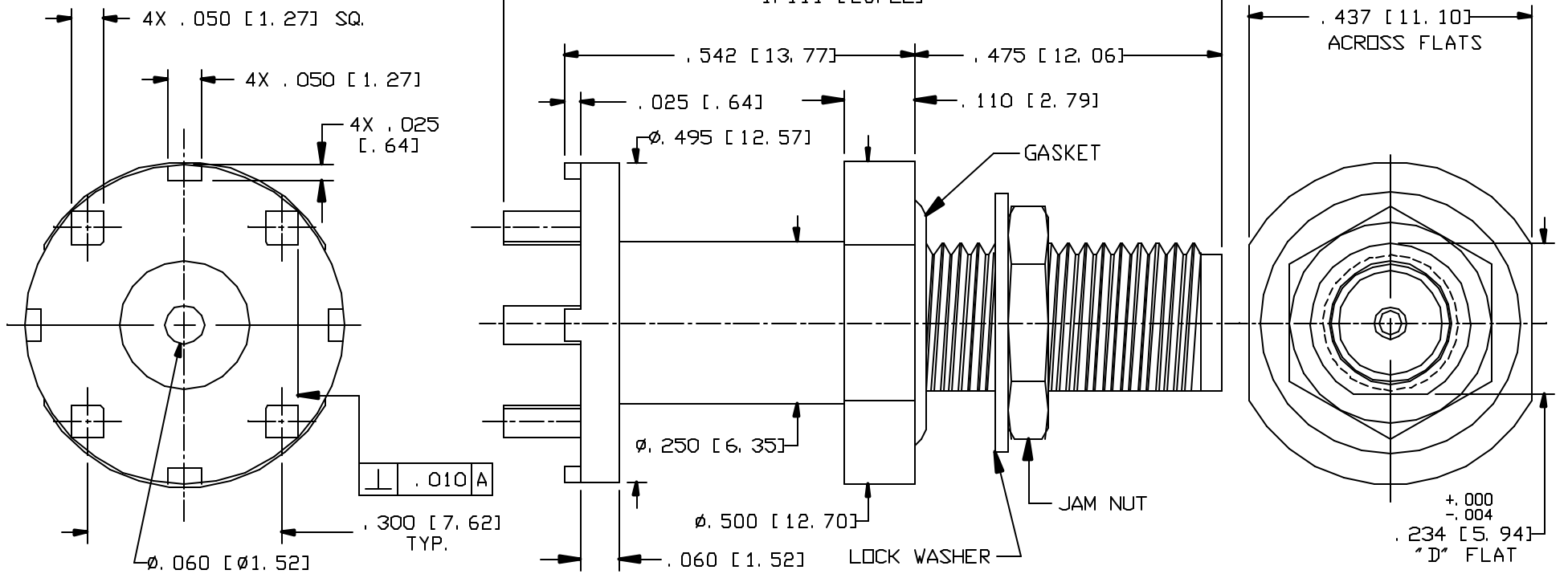


CAD DRAWING - NO MANUAL REVISIONS



NOTES:

- DESIGN AND INTERFACE PER I. D. S. -20.
- JAM NUT, LOCK WASHER AND "D"-RING ARE SHIPPED LOOSE.
- MUST MEET A 14.5 PSI (10 METER) , 30 MINUTES LEAK TEST.
(TEST 5 COMPLETE CONNECTORS PER LOT)
- MOUNTING HOLE PER DS-16A, FIGURE 3.

				<h1 style="text-align: center;">PALCO CONNECTOR</h1> <p style="text-align: center;">22 GREAT HILL RD., NAUGATUCK, CT 06770</p> <p style="text-align: center;">UNLESS OTHERWISE SPECIFIED, PALCO WORKMANSHIP STANDARDS APPLY</p> <p style="text-align: center;">TOLERANCES ON DECIMALS: XX ± .01 .XXX ± .005 ANGLES ± 1/2° 32^v</p> <p style="text-align: center;">DIMENSIONS IN INCHES OR (METRIC) DO NOT SCALE PRINTS</p>	DRAWN EK	CHECKED JEM	ENGINEER MY	APPROVED JEM	FSCM 58167
C	PER ECN 10182	02/09/10	JEN		DATE 03/01/07	DESCRIPTION SMA, WATERPROOF JACK, BULKHEAD, PC MOUNT			
B	PER ECN 9807	02/24/09	JEM			DRAWING NO. 20-1475-02			
A	PER ECN 8874	03/29/07	JEM			PLATING OPT. G, P			
O1	PRELIMINARY	03/01/07	JEN						
REV.	DESCRIPTION	DATE	APPR.	FSR # 7604					

THE INFORMATION IN THIS DOCUMENT IS CONFIDENTIAL AND PROPRIETARY AND MAY NOT BE USED FOR ANY PURPOSE WITHOUT THE WRITTEN CONSENT OF PALCO.